

# Devika Nair

AP 2D Art Final Portfolio 2024

# Sustained Investigation

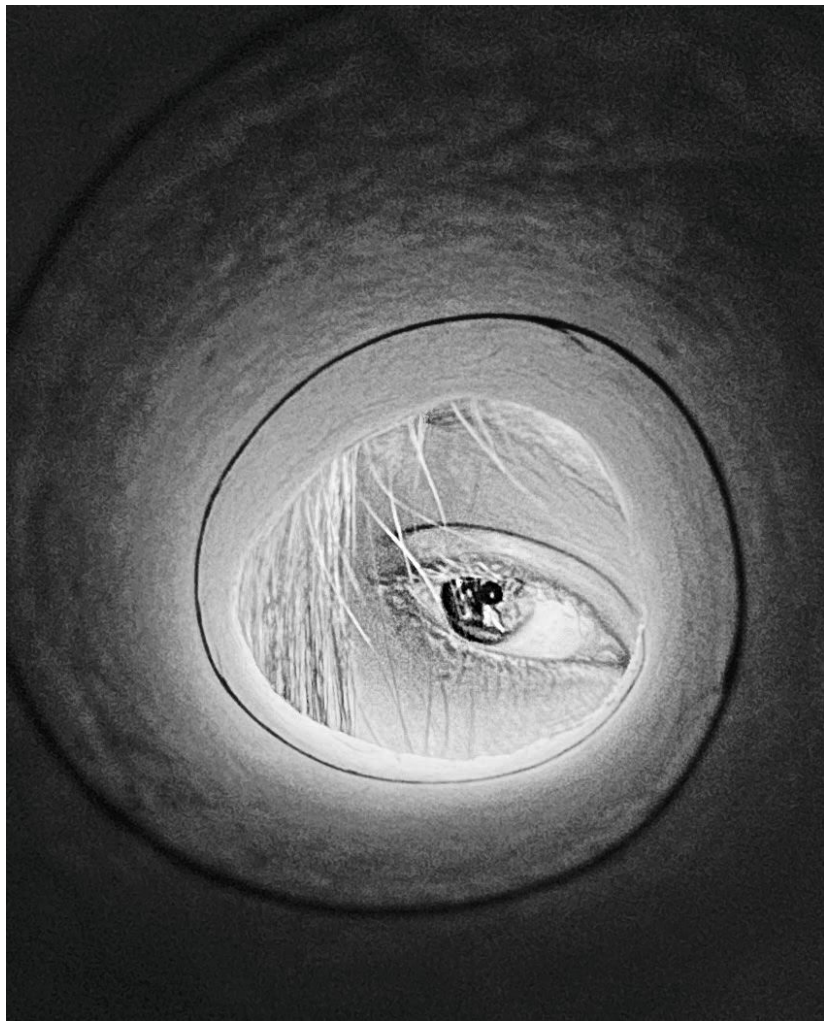
## Written evidence

Our identities are made up from our past experiences and reactions. In the times we decide to revisit these moments within our mind, we are overwhelmed by a wave of emotions that represent that point in time that we are reminded of: nostalgia. My sustained investigation attempts to display this feeling of nostalgia that seems to exemplify and alter memories, exploring the romanticism of the childhood and intensifying past sentiments.

Through the usage of depth and contrast in my images as well as shifts in brightness and highlights, I am able to portray the variety of nostalgic situations with their associated negative and positive connotations. Monochrome photographs reminiscent of early photography in the 20th century are juxtaposed with brightly saturated images, similar to how the world is viewed in one's youth. Most of the photographs use low lighting, and some have live subjects, which makes it difficult to capture due to the specific conditions necessary for the picture to turn out as it has.









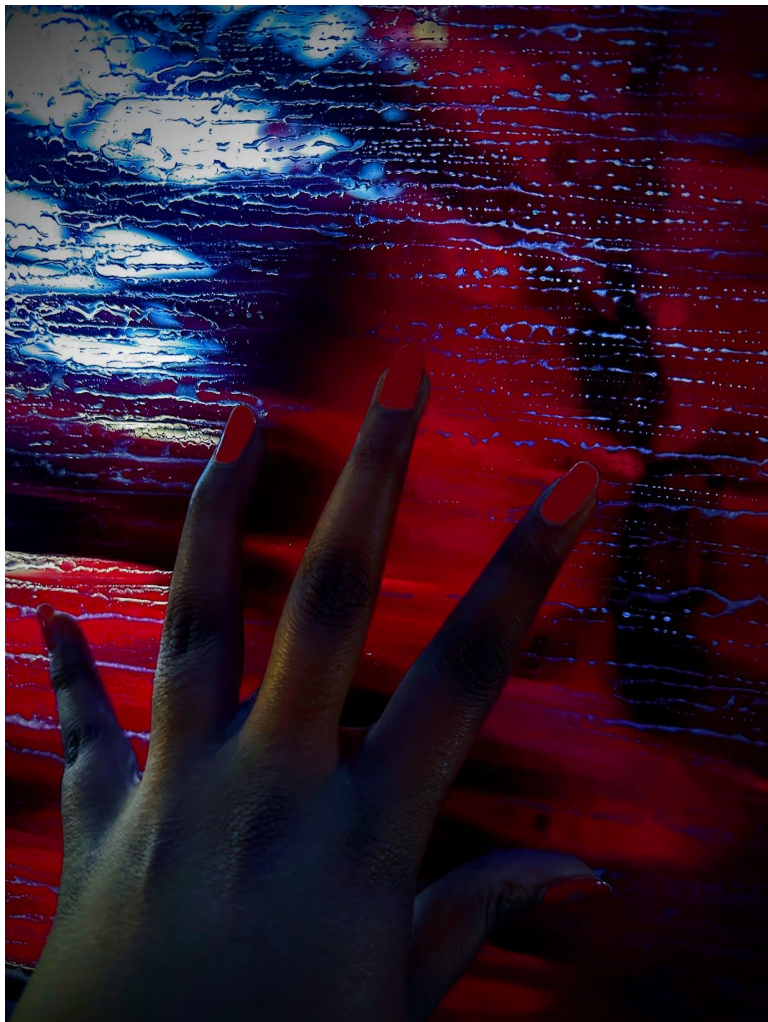


























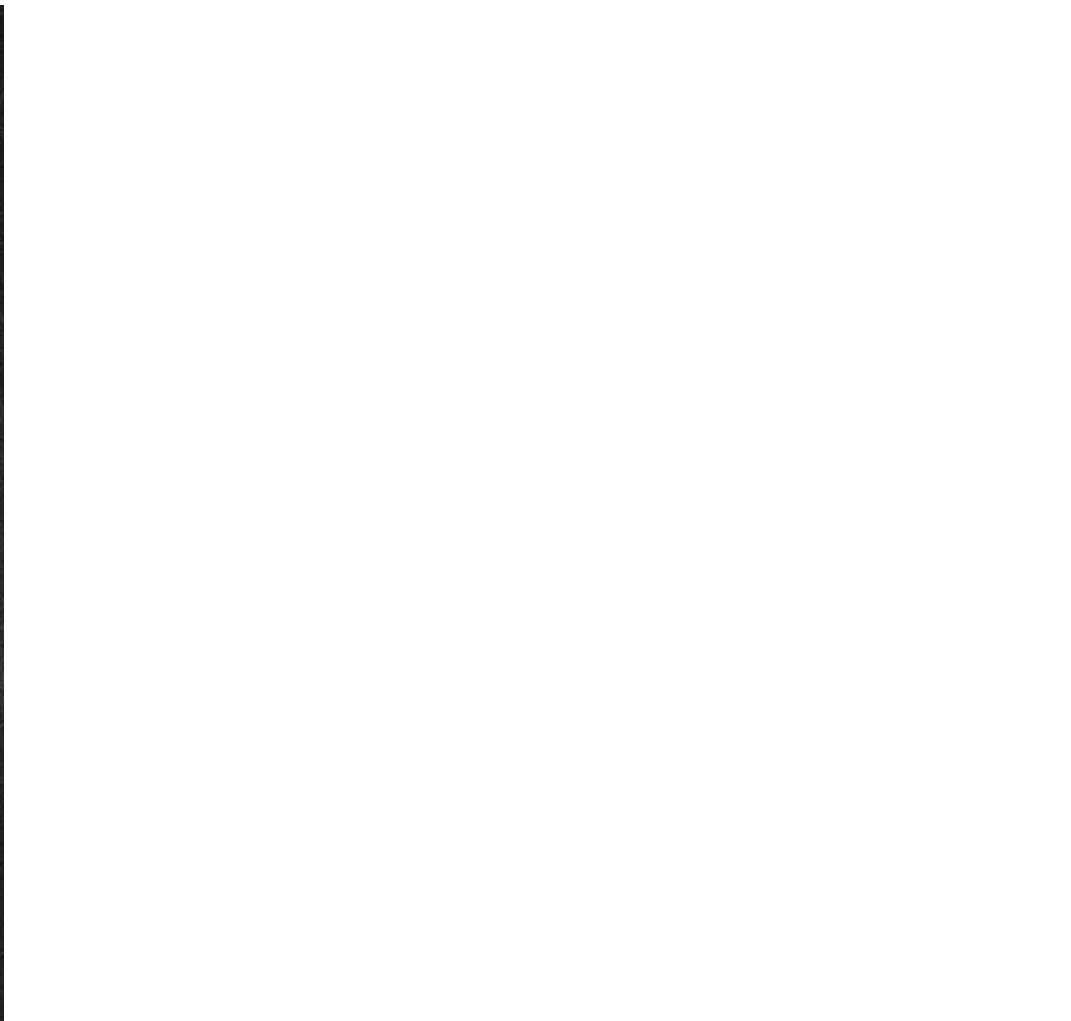
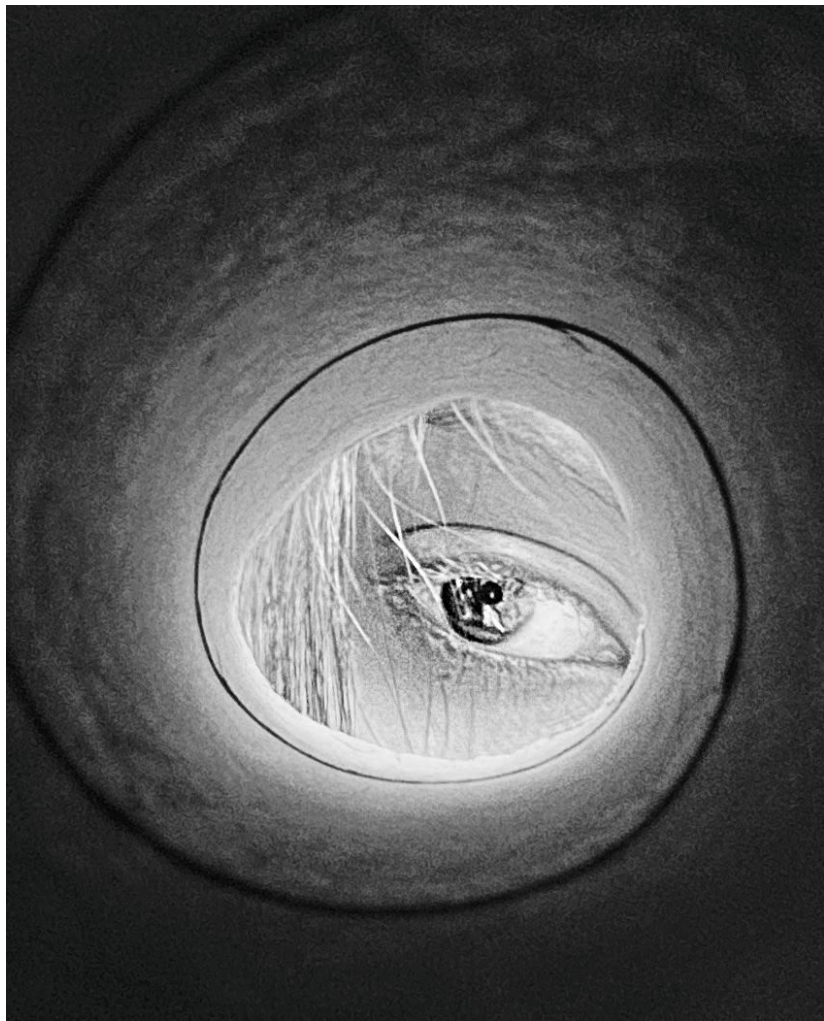
# Selected Works













## Sustained Investigation

1. Materials: Digital Camera, Photoshop/Google Photos, f/2.2 aperture, 1/40 shutter speed, 2.22mm lens, ISO1250;  
Processes: Saturation, Dodge and Burn, Highlights and Shadow, Brightness and Contrast, Color Tone, Sharpness
2. Materials: Digital Camera, Photoshop/Google Photos, f/2.2 aperture, 1/60 shutter speed, 2.22mm lens, ISO250;  
Processes: Highlights and Shadow, Brightness and Contrast, Color Tone, Sharpness
3. Materials: Digital Camera, Photoshop/Google Photos, f/1.9 aperture, 1/4 shutter speed, 2.69 mm lens, ISO1250;  
Processes: Desaturation, Dodge and Burn, Sharpness
4. Materials: Digital Camera, Photoshop/Google Photos, f/2.8 aperture, 1/3215 shutter speed, 9 mm lens, ISO25;  
Processes: Desaturation, Dodge and Burn, Highlights and Shadow, Brightness and Contrast, Sharpness
5. Materials: Digital Camera, Photoshop/Google Photos, f/1.78 aperture, 1/6211 shutter speed, 6.86 mm lens, ISO80;  
Processes: Desaturation, Dodge and Burn, Highlights and Shadow, Brightness and Contrast, Sharpness
6. Materials: Digital Camera, Photoshop/Google Photos, f/2.2 aperture, 1/160 shutter speed, 2.22 mm lens, ISO40;  
Processes: Desaturation, Dodge and Burn, Highlights and Shadow, Brightness and Contrast, Sharpness
7. Materials: Digital Camera, Photoshop/Google Photos, f/2.2 aperture, 1/76 shutter speed, 2.22mm lens, ISO320;  
Processes: Saturation, Dodge and Burn, Highlights and Shadow, Brightness and Contrast, Color Tone, Sharpness

8. Materials:Digital Camera, Photoshop/Google Photos, f/1.7 aperture, 1/33 shutter speed, 3.92 mm lens, ISO250;  
Processes:Saturation, Dodge and Burn, Highlights and Shadow, Brightness and Contrast, Color Tone, Sharpness
9. Materials:Digital Camera, Photoshop/Google Photos, f/1.78 aperture, 1/60 shutter speed, 6.86 mm lens, ISO640;  
Processes:Saturation, Dodge and Burn, Highlights and Shadow, Brightness and Contrast, Color Tone, Brush (Red)
10. Materials:Digital Camera, Photoshop/Google Photos, f/2.2 aperture, 1/40 shutter speed, 2.22mm lens, ISO1250;  
Processes:Digital Camera, Photoshop/Google Photos, f/2.2 aperture, 1/40 shutter speed, 2.22mm lens, ISO1250
11. Materials:Digital Camera, Photoshop/Google Photos, f/1.8 aperture, 1/4348 shutter speed, 6.86 mm lens, ISO80;  
Processes:Desaturation, Dodge and Burn, Highlights and Shadow, Brightness and Contrast
12. Materials:Digital Camera, Photoshop/Google Photos, f/1.78 aperture, 1/310 shutter speed, 6.86 mm lens, ISO80;  
Processes:Saturation, Dodge and Burn, Highlights and Shadow, Brightness and Contrast, Color Tone, Sharpness
13. Materials:Digital Camera, Photoshop/Google Photos, f/2.2 aperture, 1/160 shutter speed, 2.22 mm lens, ISO40;  
Processes:Desaturation, Dodge and Burn, Highlights and Shadow, Brightness and Contrast, Sharpness
14. Materials:Digital Camera, Photoshop/Google Photos, f/2.2 aperture, 1/8 shutter speed, 2.22 mm lens, ISO2500;  
Processes:Saturation, Dodge and Burn, Highlights and Shadow, Brightness and Contrast, Color Tone, Sharpness
15. Materials:Digital Camera, Photoshop/Google Photos, f/2.8 aperture, 1/1193 shutter speed, 9 mm lens, ISO32;  
Processes:Saturation, Dodge and Burn, Highlights and Shadow, Brightness and Contrast, Color Tone, Sharpness

## Selected works

1. Ideas: This piece represents the irony of insects thought as disgusting being beautiful in a child's mind.;  
Materials: Digital Camera, Photoshop/Google Photos, f/2.2 aperture, 1/76 shutter speed, 2.22mm lens, ISO320; Process: Saturation, Dodge and Burn, Highlights and Shadow, Brightness and Contrast, Color Tone, Sharpness
2. Ideas: The red leaves, reminiscent of blood, indicates how negative emotions can taint memories.; Materials: Digital Camera, Photoshop/Google Photos, f/2.2 aperture, 1/60 shutter speed, 2.22 mm lens, ISO1000; Process: Saturation, Dodge and Burn, Highlights and Shadow, Brightness and Contrast, Color Tone, Sharpness
3. Ideas: Once the train, symbolizing time, passes by, one can only reach for it unsuccessfully.; Materials: Digital Camera, Photoshop/Google Photos, f/1.7 aperture, 1/33 shutter speed, 3.92 mm lens, ISO250; Process: Saturation, Dodge and Burn, Highlights and Shadow, Brightness and Contrast, Color Tone, Sharpness
4. Ideas: Old memories, like the childhood home, are shown in a foreboding and negative perspective.; Materials: Digital Camera, Photoshop/Google Photos, f/1.78 aperture, 1/6211 shutter speed, 6.86 mm lens, ISO80; Process: Desaturation, Dodge and Burn, Highlights and Shadow, Brightness and Contrast, Sharpness
5. Ideas: The eye is the window to the soul. It shows regret and hope at the same time, looking to the future.;  
Materials: Digital Camera, Photoshop/Google Photos, f/1.9 aperture, 1/4 shutter speed, 2.69 mm lens, ISO1250;  
Process: Desaturation, Dodge and Burn, Sharpness